



SHELTERING WINGS



A Glorious Unfolding

"The unfolding of your words gives light; it gives understanding to the simple."

PSALM 119:130

From the Director



Did you know a ladybug's wings are four times the size of its body? Scientists have known for only two years how this tiny creature elegantly unfolds its wings from under their red-and-black coverings to take to the skies.

I see Sheltering Wings as a ladybug. On the outside, we conducted business as usual in 2019. But on the inside, we were unfolding enormous achievements. Together, they were forming the wings that are going to let us soar.

Those beautiful, strong wings consisted of some big milestones. Thanks to donors like you, we were able to begin construction to expand safe housing for men onsite for the first time. We were blessed with a way to turn our longtime dream of providing affordable housing for residents and a resource center for the community into actual plans. We hired dedicated and talented new employees and moved those who have been with us for a while into positions that better align with their gifts and our goals. And we helped our all-male volunteer group, Men IN Action, launch a program in which they read aloud to students in nearly every elementary school classroom in Hendricks County.

At the same time, we see residents' wings unfolding every day. They may have had to hide them from their abusers, but now the women and men here are learning to appreciate, use and hone their own skills as they work toward – can I say it? – their ultimate solo flight.

I'm not sure where the ladybug gets her strength, but I know I get mine from passionate, kind, caring donors, volunteers and staff, from residents determined to break the cycle of abuse, and from a loving, faithful God who watches over all of us in our flights.

Thank you for helping us fly.

In His Service,

A handwritten signature in blue ink that reads "C Mecklenburg".

Cassie Mecklenburg
EXECUTIVE DIRECTOR

A large, full-body portrait of Cassie Mecklenburg, the Executive Director, smiling broadly. She is wearing a white, long-sleeved, textured top. The background is a plain, light color.

Together, they were forming the wings that are going to let us soar.

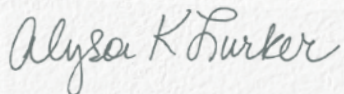
From the Chairperson

Many stories unfold at Sheltering Wings, and my colleagues on the board and I are uniquely positioned to see them do so. In 2019, uplifting stories of individual residents, employees and volunteers unfolded along with that of the shelter itself.

We took a huge step forward in our plan to expand services to the community when we began building out residential facilities for men and their children in the unfinished second floor of our facility. And, because of outreach activities like Men IN Action and the Youth Council, along with the numerous training presentations our staff does in the community, Sheltering Wings is making real progress in educating people about what domestic abuse really is, who can be victims and perpetrators, and what each of us can do to prevent it. The board and I are extremely proud of these efforts and everyone involved.

Thank you to each and every one of you who has given financially, made donations of goods, volunteered your time or told others about Sheltering Wings. I thank God for continuing to use our humble efforts to make a real and lasting difference in the lives of families and the cycle of abuse.

Sincerely,



Alyson Lurker

Chairman, Board of Directors

Vision

Sheltering Wings was formed in the name and for the sake of Jesus Christ. We will extend the love and compassion of Christ to survivors of domestic abuse and their children in the desperate circumstances of domestic abuse. Christ was never coercive or offensive and neither are our services. We will offer our help in the name of Christ to any survivor of any background.

Mission

Sheltering Wings provides emergency housing for men, women and children suffering from any form of domestic abuse. We build stable and independent lives through essential programs offered in a supportive and Christ-centered environment.

Donor-supported Services

Our services to survivors of domestic violence unfold only through the generosity of donors – individuals, clubs, groups, schools, companies and more. We structure these services to support survivors as they discover their worth and gain the skills they need to live stable, independent lives. **We focus on four areas: emergency services, life skills, prevention and education, and children’s services.**

1) Emergency Services

Providing immediate access to safety and shelter for women and men with a 24-hour helpline, safe removal, room assignments, medical referrals and pet fostering.

Men Need Emergency Abuse Support, Too

Facilities and services expanding to serve men and their children onsite

When the 24-hour helpline rings at Sheltering Wings, we don’t hear only women’s voices on the other end. Men are victims of domestic abuse, too.

When we first broached the idea of onsite residential services for male survivors, we were often met surprise and skepticism. Few people know that 1 in 7 men in the U.S. are victims.

As our plan unfolded, though, doubt gave way to resounding support.

United Way of Central Indiana committed nearly \$300,000 to renovate the shelter’s second story. The remaining amount – close to \$300,000 more – was covered with \$230,000 from in-kind support and our cash reserves. Then, when we had to raise the final \$65,000 of our share to receive the funds, **supporters like you delighted us by answering the call in just one month.**

Beginning in February 2020, men and their children will find shelter here and the same services offered to women. For everyone’s security, males and females won’t have access to each other’s residential wings, and men will be permitted only supervised access to common areas.

“Our mission hasn’t changed. We’ve simply become more inclusive,” said Executive Director Cassie Mecklenburg. “We provide emergency services, teach life skills, address children’s needs and educate people to prevent abuse. With the support of United Way and other generous individuals and organizations, we will now be able to provide all these services to men, too.”

*“Our mission hasn’t changed.
We’ve simply become more inclusive.”*



Donor-supported Services

2) Life Skills

Encouraging and equipping survivors with the confidence and life skills they need – along with emotional and mental health support – to achieve independence and stability.

We Asked for a Miracle and Got Affordable Housing for Survivors

Living independently will get a whole lot easier in 2021

Imagine fleeing your home with just a small bag of essentials, never intending to return. You have no friends or family who can safely take you in. You're on your own.

Your most pressing needs will be safe, affordable housing. Reliable transportation. Affordable child care. And, because you've dealt with the trauma of abuse, access to mental health services.

Daunting, right?

Though few of us will ever need to know if we have the skills to start over, survivors don't have a choice. In reality, 90% of our residents have never had the chance to acquire basic life skills.

Our trained staff and volunteers work diligently to educate survivors in life skills tailored to their needs. Goal-oriented plans include job training, childcare, parenting, stress management and legal advocacy, all designed to reduce the chance any survivor will feel they have to return to their abuser.



The Miracle: Apartments

Two years ago, we had a vision for solving the biggest obstacle to independence: Find affordable housing to help residents who are ready to move out of the shelter, but can't yet afford rent.

We needed a miracle – and, in 2019, an opportunity unfolded to partner with real-estate developer RealAmerica and Cummins Behavioral Health Systems. RealAmerica would build a 52-unit affordable apartment community using earned-income housing tax credits and give Sheltering Wings first right of refusal on 13 of the units for our residents. Plans are in place to staff the community center along with Cummins, providing immediate access to case management, life skills training and mental health support for former Sheltering Wings residents as well as members of the community who walk in.

Mid-2020 will see the groundbreaking of this remarkable apartment complex and out-of-the-ordinary community clubhouse.

Donor-supported Services

3) Prevention and Education

Offering a wide variety of classes, workshops, church and workplace training events, teen outreach programs, volunteer initiatives, and practical strategies designed to engage and equip the community to recognize and prevent domestic abuse and to identify and support victims.

Men IN Action Read to Kids

Men IN Action READ visits nearly every elementary school in Hendricks County

Two of the most significant ways a man can reduce violence in his community come together in the new Sheltering Wings Men IN Action READ program: volunteering to read and being a role model.

With the launch of this program in March 2019, at least one Men IN Action volunteer visited every elementary school in Hendricks County, Indiana, and read the same book, *The Invisible Boy* by Trudy Ludwig. This means that more than 9,000 kids met a man from their community who considers serving them as something all men can and should be proud to do.

Why does Sheltering Wings sponsor such an activity? **Research shows that reading aloud to children potentially helps them cope with emotions that trigger aggression, especially when they don't have a positive male role model in their lives.**

One volunteer, who is also a school administrator in a participating district, summed up the experience.

"I loved everything about it. Realizing that every elementary student in Hendricks County was hearing a consistent message of the importance of kindness was very powerful."

Join the Men IN Action

Men IN Action is a group of active, informed males exhibiting positive social behaviors throughout Indiana to end all forms of violence, including domestic violence and teen dating abuse. We support each other as we challenge the status quo and navigate life by being positive role models for our youth and each other. Join or support us at shelteringwings.org/men-in-action.

"I loved everything about it."



Donor-supported Services

4) Children's Services

Ensuring children feel at home, safe and intellectually challenged. We provide a wide range of crisis interventions, support groups and classes to help kids learn healthy daily living habits and create healthy relationships to break the cycle of abuse.



A Teenage Resident Finds a Future

Accidental attendance at a women's self-defense class helped Randy discover his calling

Randy couldn't wait to attend self-defense class. He had been living at Sheltering Wings with his mom and sister for more than a month. He didn't know the class would be full of females, and he immediately tried to back out of the door he'd just come in.

No luck. One of the women beckoned him inside.

Officer Pete Fleck volunteers to lead self-defense classes at Sheltering Wings. He took a special interest in Randy that evening and made a mental note of the boy's insightful questions about law enforcement.

Weeks passed. Even though Randy decided not to join the self-defense class again, he and Officer Fleck remained in touch. When Randy's curiosity about law enforcement was visibly growing, Officer Fleck invited him to join the Brownsburg Police Department's Explorer Program. Designed for teens interested in pursuing careers in law enforcement and criminal justice, the program includes classroom training, ride-alongs, community policing, defensive tactics, bike patrols and much more.

Randy dove into an opportunity that changed his outlook on life.

Today, Cadet Officer Randy's face brightens when he talks about his participation. **Insecurity and skepticism about authority figures have turned into deepening confidence and genuine friendships with the men and women of the department and his fellow cadets.** Randy has become an even more supportive son and patient brother as his family heals from his father's violence.

Every child who resides at Sheltering Wings with his or her parent receives dedicated attention from staff and volunteers. Hurts are healed. Attachments are deepened. Trust grows. Forgiveness is granted. And, when families are ready to move into safe housing of their own, they leave much more likely to break the cycle of domestic violence.

Resident Story:

A New Way to Define 'Caravan'

A caravan happens when a group of people follow one another to a shared destination in a long, single-file line of vehicles. One car after another. After another. After another.

Thanks to one generous donor, we redefined *caravan* this year.

Many residents come to Sheltering Wings with only what they can carry. Many don't have jobs or, worse, have to dig themselves out of difficult financial situations because of the actions of their abusers. Rebuilding life can be a struggle, especially without transportation.

One generous family decided to ease this burden for a resident about to embark on an independent life. They had their vehicle inspected at the shop, cleaned and vacuumed the interior, and donated it to Sheltering Wings. We were able to hand the keys and the clean title to a resident who had recently exited to safe housing. We shared the good news on Facebook, simply as a way of demonstrating our gratitude:

Thanks to a generous donor, this #DomesticViolence survivor and former Sheltering Wings resident has her own wheels! More than just a vehicle, it will enable her to continue building a stable and independent life for herself and her kids.

Then, the caravan began.

In the following weeks, another family donated a vehicle. Then another. Then another! Multiple Sheltering Wings residents and their children were blessed by these incredible acts of kindness. Rather than trading in or selling their vehicles and putting the cash in their pockets, they fixed them up and gave them to people who had no other way to get one. In so doing, they made investments in the lives of survivors.

These residents – one after another, after another, after another – are traveling in a caravan toward lives of safety, independence and freedom. And they're doing it in their own vehicles!



Adding and Aligning Staff to Maximize Our Mission

Opportunities to expand our mission required adding new and realigning existing staff. Each time God brings us someone new or gives us a chance to use a current team member's strengths in new ways, we grow more confident in His blessing on our mission.

Administrative Additions



Kevin Carr

As we explored ideas for deepening the administrative team's development and communications expertise, we began having conversations with Kevin Carr. An engaged board member and long-time local minister with nonprofit and extensive communications experience and deep connections in the community, Kevin quickly became our first choice. He joined the staff in August

and immediately increased our fundraising and communications capacity and creativity.

We also identified ways to strategically reassign responsibilities within the team and add new roles to it. These changes will let us pursue our mission with even greater intensity.

Residential Realignments

A year of expanding mission and increasing capacity inspired our residential team to re-examine the question that motivates them daily: **"How can we better care for survivors and children?"** After taking a comprehensive look with fresh eyes, the team realigned our case management, advocacy and life-skills program and staff into three distinct phases:



PHASE 1: Intake

Staff help residents acclimate to life at Sheltering Wings during the first 30 to 45 days of their stay, building trust and a sense of safety through compassion and skill. In this phase, they focus on helping new residents and their kids feel safe and settle in.

PHASE 2: Life Skills

During the middle six to nine months of a resident's stay, a team of case managers and advocates devote themselves to understanding and supporting each individual's unique needs. Together, they build personalized plans for building stable and independent lives.

PHASE 3: Transition to Safe Housing

During the final four to six months of a resident's stay, we surround them with the financial, social, emotional and spiritual supports they need to remain safe and independent when they leave. The staff are savvy researchers and resource-gatherers who know what it takes for residents to achieve their potential.

The residential team also worked closely with a group of men from the community to create a support program for new male residents expected in 2020. Insights from these volunteers added invaluable dimension to the project.

Thank You

to the individuals, companies and organizations for their financial support in 2019.
You changed more lives than you will ever know.

2019 Sheltering Wings Supporters

LIFE CHANGER

(\$25,000 and above)

Deem, LLC
IU Health West
Maplehurst Bakeries
United Way Of Central Indiana

SUSTAINER

(\$10,000 - 24,999)

Bailey Trucking Inc.
Bailey, Cindy
Capstone Benefit Advisors
ClaimAid Consulting Corp.
Cornerstone Christian Church
Hendricks County Community Foundation
Hendricks Regional Health
Plainfield Christian Church ABC Class
Light Your World
Vine and Branches
Pools of Fun

CORNERSTONE

(\$5,000 - 9,999)

Name
Byram, Paul and Betty Lou
Centene Management Company
Cunningham Restaurant Group
Danville Auto Service & Tire
Haddad Foundation
Hendricks Power Cooperative
Hunt, Diane
Hylton, Greg and Terri
JÉ Fehsenfeld Family Foundation
Kingsway Christian Church
Klay, James A.
Pacers Basketball Corp. Foundation
Realtor Foundation
Richards, Stevan and Patricia
The Blake Family Charitable Foundation
The Shaffer Family Foundation, A fund of Indpls Foundation
The TJX Foundation, Inc.
Walmart Ecommerce #6280

PILLAR

(\$2,500 - 4,999)

American Health Network
Avon United Methodist Church
Branscum, Jerome and Missy
Calihan, Larry and Stamatkin, Hannah
Call, Ryan and Libby
Carr, Kevin and Kelly
Center Township Trustee
Clapp, Brandon and Samantha

Clark CPA Group
Coates, James
DeFur, Kyle and Dana
Draper, Judith
Duke Energy Foundation
Enterprise Holdings
First Merchants Foundation
Gadberry Insurance/PFG USA INC
Gentech Associates, Inc.
Hilpisch, Steven and Karen
Illinois Tool Works Foundation
Kersteff, John and Deb
Leonard, Bob and Treva
Line, Gary
Lurker, Alyson and John
Mac Fehsenfeld Family Foundation, Inc.
McClain, Jonathan and Jessica
McGowan, Steve and Tabby
MCR Charitable Foundation, Inc.
Merrill Lynch
National Christian Foundation - Indiana
R & M Electric
Randall, Christina
Renaissance Charitable Foundation, Inc.
Rozzi & Associates LLC
Rozzi, Chris and Susan
Schroeder, Carrie
Schwab Charitable Fund
Stegemiller, Ronald and Rebecca
Stoker, Philipp
The Brave Heart Foundation
The Scheumann Foundation
Thompson, Kurt and Amy
Vanguard Charitable
Waits, Jennifer and Chad
Welch, Tom
Wellspring Christian Church

SHELTER SUPPORTER

(\$500 - 2,499)

2nd Sunday Dinner
Absolute Beauty, LLC
Abstract and Title Guaranty Co., Inc.
Acme Coatings, Inc.
Albertson, John and Stephanie
Ali, Lucille
All Occasion Tent Rental, Inc.
Ally Accounting
Amazon Smile Foundation
American Mortgage Service Company
Amethyst Dance Festival
Andrews, David and Sharon
Aqua Systems
Atkinson, Don and Janet
Avon High School - Interact Club
Avon Junior Athletic Association, Inc.
Ayers, Logan
Baenziger, Peter and Jenny

Bailey, Bill and Hay, Denise
Bailey, JoAnn
Bailey, Kimberly
Baker, Michael
Ballard, Mary J.
Banning Engineering
Barrick, Joanne
Bartlett Chapel United Methodist Church
Bayless, Raylene
Beacon of Hope
Beard, Bill and Karen
Beard, Lloyd
Beard, Valerie
Beauty Brands
Bellville, Larry and Linda
Bennington, Jeffrey
Bible, Ann
Blue River Pharmacy
Bolt, Richard and Nancy
Bordeau, Randy and April
Bradford, Rick and Jacqueline
Brehob, Judy and John
Broeker, Camille M.
Brownsburg Custom Cabinets
Brownsburg Lions Club
Budny, Skip and Kay
Bumgardner, Tim and Kathleen
Burgan, Christia
Burkert, Cathy
C&G Emanuel Charitable Foundation
Cadwell, Gail E.
Care To Change
Chaplin, Scott and Carolyn
Charles & Diane Bell Gift Fund of Ayco Charitable Foundation
Charles Schwab
Chicago's Pizza
Chris McCreery Insurance Agency, Inc.
Church Church Hittle Antrim
Clark, Thomas and Lucie
Clayton Christian Church
Conservation Bird Dog Club
Cook, James and Linda
Cooney, Jan and Janice
Covance Central Lab Services
Creed, Brent B.
Crossroads Church
Crutcher, Alicia and Bruce
Cunningham, Mindy and Mike
Czerwonky, Sherry
Dawes, Dennis and Yao-Hsin
DeHart, George and Shawn
DHL Supply Chain
DiBenedetto, Chris and Kelly
Dimos, John
Disney, Sally
Donovan CPAs and Advisors
Dossman, Jeffrey

Drone-Kayser, Kaye
E M Studio Salon LLC
e. Valuations, LLC
Echerd, Melissa and Jeremy
Edward Jones
Eldridge, Jimmie and Barbara
Eli Lilly & Company Foundation
Endeavor Communications
Ferland, Priscilla A.
Ferland, Yvette
Ferman, Chad and Amber
Ford, Steve
Forgue, Cheryl
Fraternal Order of Eagles Auxiliary 3207
Fry, Gary
Gehman, Larry and Sue
Genesco
Gilbert, Richard and Kim
Good Samaritan Episcopal Church, Inc
Green Cycle McCarty
Griffin, Chris and Lori
Griggs, Natalie
Groninger, Beth
Grothen, Chad and Kelli
Ground Loop Solutions
H2A2
Hartman, Harold K.
Harvest Bible Chapel Indy West
Hassfurdur, Steve and Marta
Hawn, Richard and Lisa
Hayward, Marilyn K.
Heinekamp, Steve and Deann
Helm, Dave and Nanette
Hendricks County Antique Tractor Association
Hendricks County Marketing - Div. Of MIBOR
Hess, Jim and Sheree
Hodges, Chad and Angela
Holaday, Carolyn S.
Hostalet, Gabriel
Hostetter & Associates
Huffman, Richard and Deborah
Huizenga, Linda
Hunt, Loren and Sandra
Hurst Olds Club of America/Mr French
Hylton, Eric and Mercy
Hylton, Larry and Anna
Indiana Medical Group Management Association
Indianapolis Colts
Ingram Micro Mobility
Ivy Investments
Jager, Rama and Patricia
Jay, James and Marsha
Johnston, Stephen
JP Morgan Securities LLC
JPMorgan Chase & Co. - Employee

Giving Campaign
Kappa Kappa Kappa Inc. Eta Kappa Inc.
Avon Chapter
Kemper CPA Group
Kiemel, Richard
Kimmerle, James and Kathy
King, Michael and Mary
Kirchoff, Bill and Diane
Knock, Kevin and Gretchen
Kovey, Stephen and Donna
Lacey, Cindi and Brad
Lamb, Mark and Tina
Lampson, Bill and Joyce
LaPierre, Chas and Amy
Law Office of Claire Lewis
Leffler, Rick and Cindy
Leous, Michael
LGA Retail, Inc.
Link Federal Credit Union
Lipsey, Robert and Margaret
Livingston, Carolyn
Lizton United Methodist Church
Loren Delp, Hendricks County Prosecutor
Lovejoy, Sharon D.
LPL Financial
Lush, Sandra K.
Malone, Michael and Karen
Marathon Petroleum Co LP
Marsh, David and Cyndi
Martin, Stan and Jean
Marvin D. Guffin, CLU INC
Massey, David and Nancy
Matthews, Steve and Karen-Lee
McBride, James and Jeannine
McCain, Timothy
McCain, Joyce
McCoy, John and Martha
McIntyre, Larry and Pamela
McKeen, Nicole
Mecklenburg, Nick and Cassie
Messiah-ELCA
Miller, Chris
Miller, Eric and Rachel
Miller, Randy and Diane
Mission House Realty LLC
Moneymaker, Lou and Janet
Moore, Paula and William
Morgan Stanley Gift Fun
Mosher, Catherine
Mulligan, Tiffany
Mulligan, Tom and Paula
Murray, John
Nadin, Jerry and Sue
National Financial Services LLC
Network For Good
New Maysville Community Church
North Salem Christian Church

2019 Sheltering Wings Supporters

North Salem State Bank
 Northview Christian Church
 Nunaley, Martha
 Nysewander, Paul and Nancy
 O'Hearn, Amy and David
 Old National Bank
 O'Leary, Tom and Stacy
 Olney, Craig and Christy
 Olson, Pamela
 Padgett, Aaron
 Palmer, Andrew
 Perkins, Anthony and Susan
 Phi Delta Kappa
 Photography By Sarah Crail
 Piano Warehouse of Indianapolis
 Plainfield United Methodist Church
 Plainfield United Methodist Women
 Prichard, Eric
 Psi Iota Xi, Gamma Nu Chapter
 Putman, Mark and Jayne
 Putman, Micah
 Randle Family Foundation
 Ray's Trash
 Read Family Charitable Fund, of
 Hamilton County Community
 Foundation
 Richardson, Jeremy and Karen
 Richardson, Tammy and Tom
 Roberts, David and Angela
 Sandberg, Robert and Brandy
 Schmitz, Jonathan
 Schooley, Donald and Nancy
 Shay, Brent
 Shoemaker, Amy and Timothy
 Short, Lowell and Diane
 Smarrella Consulting, LLC
 Smarrella, Tony and Kerrie
 Smith, Daniel and Diana
 Smith, Margaret
 Smith, Ray and Linda
 Smith, Troy and Margaret
 Soult, Michael
 Spirit of Life Church
 Sprague, Mark and Laurie
 Springer, Bill and Debbie
 St. Susanna Catholic Church
 State Bank of Lizton Financial
 Steel Dynamics, Inc.
 Steffen, Phillip and Jami
 Steward, Cindy
 Stoops Buick-GMC
 Storms-McMullen Electric Inc.
 Strada Education Network
 Swan, Dexter
 T & W Corporation
 Tanner, David and Melissa
 Taylor-Schmitz, Lisa G.
 The Beck Foundation
 The Church by the Side of the Road
 Thompson, Nicole
 Thomson, Angela
 Thrivent Financial of South Marion-
 Johnson County Chapter
 Tincher, Chris and Amber

Town Planner
 Traders Point Christian Church West
 UBS Financial Services, Inc.
 United HealthCare
 United Way Of Greater Atlanta
 United Way Of Midland County
 UPS
 Vaught, William and Christine
 Ward, Terry and Katherine
 Ware, Nancy and James
 Wellbrooke of Avon
 Westfall, Jennifer and Marc
 Westside Church of the Nazarene
 Wheelock, Dave and Marilyn
 Whitesell, Cory
 Whitestone Christian Church
 Wilson, Chris
 Wolfe, Leslie
 Woodforest National Bank
 World Communion Cups
 Youth Enhancement and Training
 Initiative
 Zierke, Jason and Lauren
 Zormeier Cosmetic Surgery

SHELTER FRIEND (\$250 - 499)

Ahrens, Myra
 Ameriprise
 Ames, Kapri
 Andrews, Jason
 Anglea, Dawn
 Atkinson, Nancy S.
 Battistini, Peter and Carol
 Beasley's Orchard
 Bell, Jamie and Lori
 Bengel, Brad and Laura
 Benning, James and Mary
 Berry, Marchelle
 Brawner, Rebecca
 Bread Basket Bakery
 Briggs, Douglas
 Brodnicki, George and Chris
 Brown, John and Jeretta
 Brown, Walt and Sherry
 Burger, Nicholas
 Burns, Debra and Bob
 Burton, Mary L.
 Calvary United Methodist Church
 Camby Community Church
 Carter, Janet
 Cassity, Marvin and Reta
 Cauldwell, Rebecca
 Charities Aid Foundation Of American
 Chavez, William and Crystal
 Coatesville United Methodist Church
 Collins, Shirley and James
 Cooke, Dennis
 Cooper, Eric
 Cox, Holly K.
 Culver, Amanda
 Damler, Robert and Elaine
 Danda, Sean

Dangcil, Kathlyn
 Danville United Methodist Church -
 Women
 Delp, Angela and Loren
 Delta Alpha Gamma Sorority
 Drake, Debbie
 Duke Energy Indiana - Business Women's
 Network
 Dumond, William and Jane
 Eagle Insulation LLC
 Eback, Marilyn and Geoffrey
 Edmondson, Johanna and Jim
 Elliott, Kent and Amy
 Evans, Sean
 Ewing, John and Marvene
 Fellers, Anthony
 Fellowship O Christian Ladies
 Fitt, Johnny and Susan
 Flap-Jacks Pancake House
 Fultz, Suzanne L.
 Furner, Ray and Pat
 Gerbers, Jan A.
 Gibbs, Teresa
 Gibling, James and Debra
 Gill, Joe and Nan
 GraceWay Fellowship
 Grayson, Ann
 Greene, Heidi
 Hammer, Rita
 Hartley, Hannah
 Haun, Robin and Shane
 Heckman, Ed and Joan
 Heibult, Kale
 Hendricks County FOP Lodge #132
 Hendricks County Republican Women
 Henehan, Mary
 Hildebrand, Jeffrey and Hill, Theresa
 Honeybaked Ham
 Hoops, Andrea
 Huckstep, Steve and Marsha
 Jones, Gregg
 JP Morgan Chase Foundation
 Keown, Dan
 Kepler, Thomas
 Kiefer, Bob
 Kiefer, Brent
 Kirkpatrick, Sue
 Kroger
 Kroger - Brownsburg
 Laughlin, Mark and Donna
 Lawler, Lori K.
 Leininger, Timothy and Tiffany
 Leiviska, Darren and Susan
 Litke, Aaron and Jillian
 Long, Christopher E.
 Lyte, Marcus and Veronica
 Mader Construction
 Martin, Robert and Margo
 Maurer Family Foundation Inc.
 McBride, Trent and Tara
 McCauley, Stephen
 Mecklenburg, Paul and Sally
 Miller, David
 Mings, Scott and Krista

Morton, Shannon
 Mustang Club of Indianapolis
 My Tribute Gift Foundation, Inc.
 Myers, Joseph D.
 Myers, Rick and Catherine
 Nadelin, John
 Norman, William
 Notch 8 Athletics
 Nysewander, Beverley
 Our Shepherd Lutheran Church
 Padgett, Steve and Geraldine
 Payne, Michelle and William
 Peebles, Buford
 Perry, Emily and Brian
 Perry, Michelle
 Ping's Tree Service
 Pittsboro Christian Church
 Plainfield Christ Fellowship
 Prather, Doug and Wendy
 Quandee, Beckie
 Rabe, David and Melinda
 Rhodes, Angela
 Rhodes, Mark and Martha
 Rice, Jason
 Rice, Steven and Lori
 RIZ, LLC (Brownsburg Marathon)
 Roberts, Dave and Donita
 Rogers, Lisa M.
 Rowls, Darla and Darla
 Sabelhaus, Brad and Tara
 Sadler III, Jack and Casey
 Schultz, Beverly
 Scott, Sabrena
 Selzer, Don and Cindy
 Shaw, Dwayne and Pam
 Sheets, James and Roberta
 Shepperd, Elizabeth L.
 Smith-Drake, Joelene
 Sparks, Lisa
 State Bank of Lizton
 Stoll, Cathy
 Stoney Meadow HOA
 TD Ameritrade Clearing
 Ternet, Greg and Lesa
 The Abstract & Title Guaranty Co., Inc.
 Two West, LLC
 Vallosio, Jonathan and Ashley
 Walker, Charles and Patsy
 Walmart - Brownsburg #2788
 Waterman, Whitney
 Waterson, Nicholas and Mary
 Watson, Maynard
 Weesner, Erin
 Wellman, Susie
 White Lick Presbyterian Church
 Wiggins, John and Janet

Wilkerson, Cynthia
 Wilson, Cindy
 Wilson, Donald E.
 Wilson, Jane
 Wilson, Lavona
 Wood, Judy
 Yeung, Winnie
 Zigler, Mary
 Zollman, Harold and Deborah
 Zook, Seth and Camille

TRIBUTES

In Honor of Ann G. Benthin
 In Honor of Joetta Bokma
 In Honor of Alan Brown
 In Honor of Jane Bucy
 In Honor of Rodney Bucy
 In Honor of Sandra Chaney
 In Honor of Nick Clay
 In Memory of Dorothy Dodson
 In Memory of Vicki Fulton
 In Honor of Andrew and James Glennon
 In Honor of Jared Hammack
 In Honor of Amanda Hessel
 In Memory of Joyce Richardson
 In Memory of Junior Merritt
 In Honor of Lauren Terrell &
 Aaron Briz's wedding
 In Honor of Krysten Bayha &
 Joe Carey's wedding
 In Honor of Daniel and Caitlin Suckow
 In Honor of Yeshua HaMashiach
 (Christ Jesus)
 In Honor of God of Israel and His Son
 & Servant, our Messiah, Yeshau!
 In Honor of Mary East
 In Honor of Rosalee Elder
 In Honor of Neil Sullivan
 In Honor of Tiffany Carter
 In Memory of Dixie Israel
 In Memory of Sarah Killion
 In Honor of Bill Lampson
 In Honor of Cassie Mecklenburg
 In Memory of Arielle Miller
 In Memory of Kathryn Nickell
 In Memory of Deb Penrod
 In Honor of Jayne Putman
 In Honor of Joyce Schumm
 In Honor of Kenneth S. Swan
 In Memory of Florine Tharp
 In Memory of Pauline Trewartha
 In Honor of Christina Warren
 In Honor of Daniel Webster

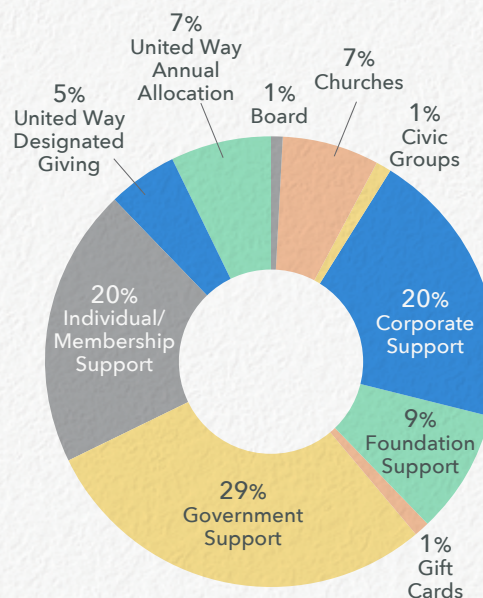


Sheltering Wings is an
 accredited partner of United
 Way of Central Indiana.

Financial Summary

Income

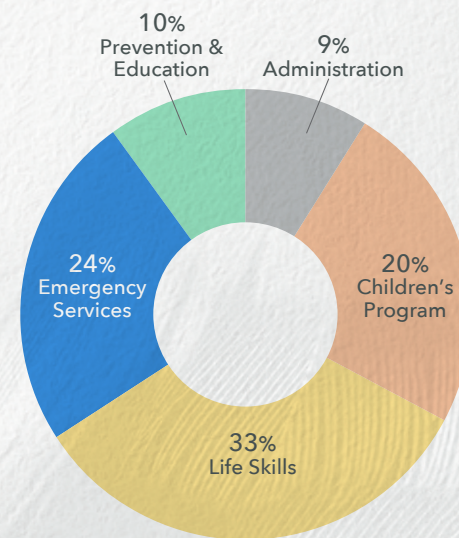
Board of Directors	\$ 18,099.00	1%
Churches	105,506.77	7%
Civic Groups	12,360.10	1%
Corporate Support	315,867.33	20%
Foundation Support	141,224.48	9%
Gift Cards	9,049.19	1%
Interest Income	182.70	0%
Other Income	1,368.07	0%
Government Support	453,497.76	29%
Individual/Membership Support	312,951.14	20%
Schools	1,246.00	0%
United Way Annual Allocation	77,820.61	5%
United Way Designated Giving	115,461.67	7%
	\$ 1,564,634.82	



Income

Expenses

Administration	\$ 151,807.81	9%
Emergency Services	404,820.82	24%
Life Skills	556,628.63	33%
Children's Program	404,820.82	24%
Prevention & Education	168,675.34	10%
	\$ 1,686,753.42	



Expenses

These are preliminary, unaudited year-end figures and may differ slightly from the final figures we will report to state and federal governments. Our finances are reviewed annually by an independent public accounting firm. For questions about our financial statements and audit information, please contact the executive director at (317) 386-5052.

As a 501(c)3 non-profit organization, Sheltering Wings is led by a board of directors made up of local leaders committed to serving victims of domestic violence and educating the community about domestic violence, all in Christ's image. Directors oversee planning and operations, lending their professional expertise and skills to ensure that services comply with responsible stewardship, the Sheltering Wings mission, vision and guiding principles, and state and federal laws governing nonprofit organizations.

Board of Directors

Alyson Lurker, Chair
Butler University

Tiffany Mulligan, Vice Chair
IN Family and Social Services

Dave Clark, Treasurer
Clark CPA Group

Greg Hylton, Secretary
Indianapolis Colts

Raylene Baugh
Community Member

Dave Blanford
ClaimAid Consulting Corp.

Ryan Call
Compass Medical Solutions

Kevin Carr
Plainfield Christian Church

Angela Delp
Community Member

Dave Helm
Great Lakes Capital Fund

Bob Leonard
Community Member

Janet Moneymaker
Brownsburg Community School Corp. (retired)

Kevin Speer, JD
Hendricks Regional Health

Cassie Mecklenburg
Executive Director
Sheltering Wings

*With your support, our residents are
unfolding their wings and soaring into a
future that is brighter. Safer. More hopeful.*





Healthy Me. Stronger Us.

24-Hour Helpline : (317) 745-1496

Donor Line: (317) 718-5460

shelteringwings.org

P.O. Box 92, Danville, IN 46122



© 2020 Sheltering Wings. All rights reserved